

Adjustable handles

- **Glass-fibre reinforced polyamide based (PA) technopolymer lever body.**

Resistant to solvents, oils, greases and other chemical agents.

- **Black** standard colour with matte finish. On request and for sufficient quantities it can be supplied in RAL 2004 orange, RAL 7031 grey or RAL 6011 green.

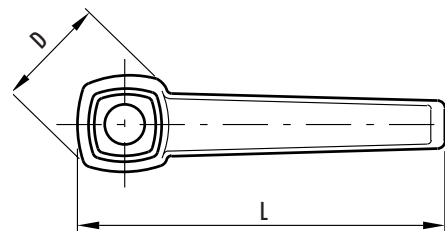
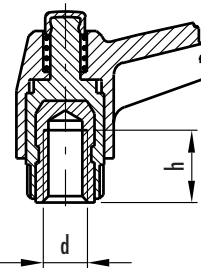
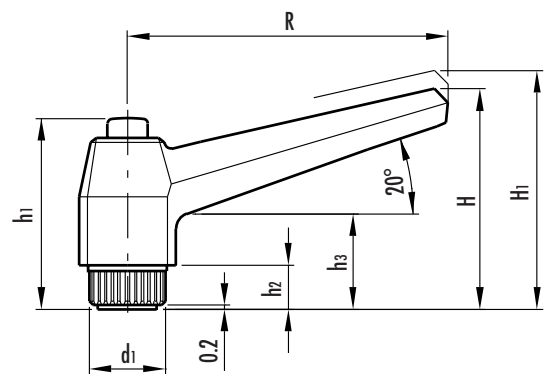
- Technopolymer **locking element** with knurled protruding part to make initial screwing easier. Number of teeth (z) shown in the table.

- **Brass insert** with tapped blind hole.

- Technopolymer **retaining pin** integrally moulded with locking element. AISI 302 stainless steel return spring.

- Technopolymer **push button**; compared to other types of adjustable handle, with steel retaining screw, this solution offers the following advantages:

- absolute electrical insulation for the operator during operation
- no visible steel parts subject to rust
- comfortable lever release.



Particularly suitable when lever turning angle is limited owing to lack of space.

To adjust during clamping, lift lever to disengage clamping device toothing and bring it back to start position. By releasing the lever the return spring automatically engages toothing once again.



This product has been selected for its design by the international jury of "Die gute Industrieform-Hannover 1988"

Stress resistance: (see note page 172).

3

170

Clamping levers

Standard elements		Main dimensions									Mounting hole		Teeth no.	Weight		
Code	Description	R	L	D	H	H1	h1	h2	h3	d1	d	h	z	grams		
141131	MRX.40 B-M5	42	50	18	32	35.5	29	6	14	12	M5	10	18	10		
141141	MRX.40 B-M6										M6					
141411	MRX.63 B-M6	63	73	23	43	46.5	37	8	17	15	M6	16	20	21		
141421	MRX.63 B-M8										M8				13	22
142111	MRX.80 B-M8	80	92	28	54	58.5	47	10	22	19	M8	20	24	41		
142121	MRX.80 B-M10										M10				18	42
142131	MRX.80 B-M12										M12				17	45
142501	MRX.100 B-M10	100	114	33	65	69.5	54	12	25	25	M10	20	28	70		
142511	MRX.100 B-M12										M12				20	74
142521	MRX.100 B-M14										M14				20	84
142531	MRX.100 B-M16										M16				22	81