



Adjustable handles

- **Glass-fibre reinforced polyamide based (PA) technopolymer lever body.**

Resistant to solvents, oils, greases and other chemical agents.

- **Black** standard colour with matte finish.

On request and for sufficient quantities it can be supplied in RAL 2004 orange, RAL 7031 grey or RAL 6011 green.

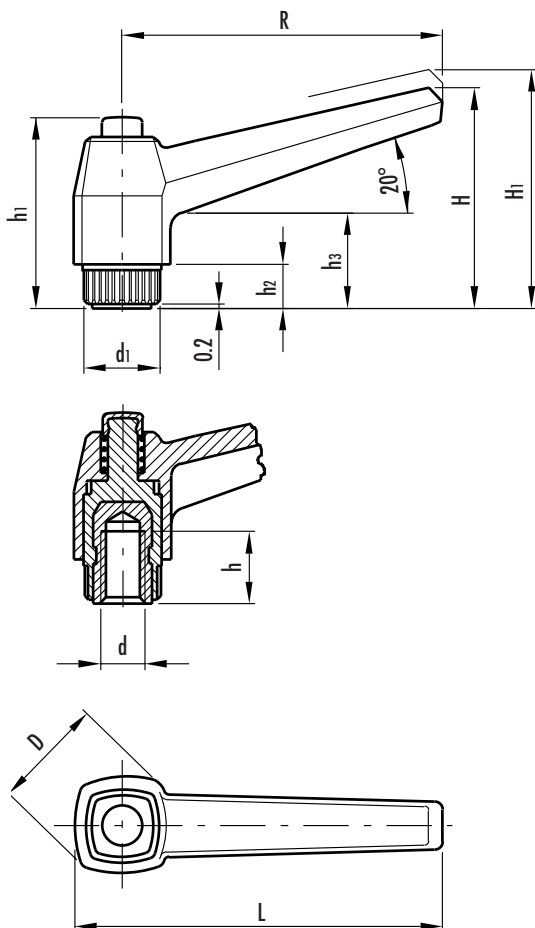
- Technopolymer **locking element** with knurled protruding part to make initial screwing easier. Number of teeth (z) shown in the table.

- **AISI 303 stainless steel insert** with tapped blind hole.

- Technopolymer **retaining pin** integrally moulded with locking element. AISI 302 stainless steel return spring.

- Technopolymer **push button**: compared to other types of adjustable handle, with metal retaining screw, this solution offers the following advantages:

- absolute electrical insulation for the operator during operation
- comfortable lever release.



Particularly suitable when lever turning angle is limited owing to lack of space. To adjust during clamping, lift lever to disengage clamping device tooting and bring it back to start position. By releasing the lever the return spring automatically engages tooting once again.

The metal part, built in stainless steel, makes this handle suitable for use on medical machines, equipment for the food and pharmaceutical industry and wherever hygienic, climatic and environmental factors or laws make it mandatory to use corrosion resistant materials.



This product has been selected for its design by the international jury of "Die gute Industrieform-Hannover 1988"

Stress resistance: (see note page 172).

Standard elements		Main dimensions									Mounting hole		Teeth no.	Weight
Code	Description	R	L	D	H	H1	h1	h2	h3	d1	d 6H	h	z	grams
141185	MRX.40 S-M5-INOX	42	50	18	32	35.5	29	6	14	12	M5	6	18	14
141191	MRX.40 S-M6-INOX										M6	10		12
141423	MRX.63 S-M6-INOX	63	73	23	43	46.5	37	8	17	15	M6	12	20	24
141425	MRX.63 S-M8-INOX										M8	13		22
142155	MRX.80 S-M8-INOX	80	92	28	54	69.5	47	10	22	19	M8	13	24	44
142161	MRX.80 S-M10-INOX										M10	17		42
142561	MRX.100 S-M12-INOX	100	114	33	65	69.5	54	12	25	25	M12	20	28	75