

Adjustable handles with threaded stud

- **Glass-fibre reinforced polyamide based (PA) technopolymer lever body.**

Resistant to solvents, oils, greases and other chemical agents.

- Black standard colour with matte finish. On request and for sufficient quantities it can be supplied in RAL 2004 orange, RAL 7031 grey or RAL 6011 green.

- Technopolymer **locking element** with knurled protruding part to make initial screwing easier. Number of teeth z shown in the table.

- **AISI 303 stainless steel stud** with chamfered flat end as in UNI table 947: ISO 4753.

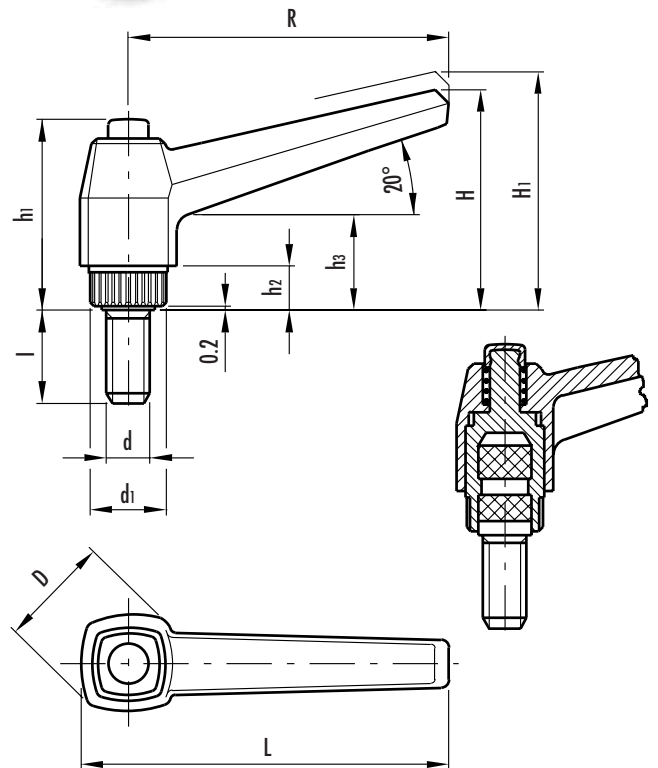
- Technopolymer **retaining pin** integrally moulded with locking element. AISI 302 stainless steel return spring.

- Technopolymer **push button**: compared to other types of adjustable handle, with metal retaining screw, this solution offers the following advantages:

- absolute electrical insulation for the operator during operation
- comfortable lever release.

Particularly suitable when lever turning angle is limited owing to lack of space. To adjust during clamping, lift lever to disengage clamping device and bring it back to start position. By releasing the lever the return spring automatically engages toothing once again.

The metal part, built in stainless steel, makes this handle suitable for use on medical machines, equipment for the food and pharmaceutical industry and wherever hygienic, climatic and environmental factors or laws make it mandatory to use corrosion resistant materials.



3
174

Clamping levers



This product has been selected for its design by the international jury of "Die gute Industrieform-Hannover 1988"

Stress resistance: (see note page 172).

Standard elements		Main dimensions									Threaded stud		Teeth no.	Weight	
Code	Description	R	L	D	H	H1	h1	h2	h3	d1	d 6g	l	z	grams	
141371	MRX.40 S-p-M6x16-INOX	42	50	18	32	35.5	29	6	14	12	M6	16	18	13	
141372	MRX.40 S-p-M6x20-INOX										M6	20			14
141373	MRX.40 S-p-M6x25-INOX										M6	25			15
141374	MRX.40 S-p-M6x30-INOX										M6	30			16
141700	MRX.63 S-p-M8x16-INOX	63	73	23	43	46.5	37	8	17	15	M8	16	20	28	
141701	MRX.63 S-p-M8x20-INOX										M8	20		29	
141702	MRX.63 S-p-M8x25-INOX										M8	25		31	
141711	MRX.63 S-p-M8x30-INOX										M8	30		32	
141713	MRX.63 S-p-M8x40-INOX										M8	40		36	
141715	MRX.63 S-p-M8x50-INOX										M8	50		38	
142381	MRX.80 S-p-M10x20-INOX	80	92	28	54	58.5	47	10	22	19	M10	20	24	54	
142385	MRX.80 S-p-M10x30-INOX										M10	30		60	
142387	MRX.80 S-p-M10x40-INOX										M10	40		62	
142391	MRX.80 S-p-M12x30-INOX										M12	30		68	
142393	MRX.80 S-p-M12x40-INOX										M12	40		75	
142395	MRX.80 S-p-M12x50-INOX										M12	50		83	
143001	MRX.100 S-p-M12x30-INOX	100	114	33	65	69.5	54	12	25	25	M12	30	28	97	
143003	MRX.100 S-p-M12x40-INOX										M12	40		105	
143005	MRX.100 S-p-M12x50-INOX										M12	50		113	
143009	MRX.100 S-p-M12x70-INOX										M12	70		128	