

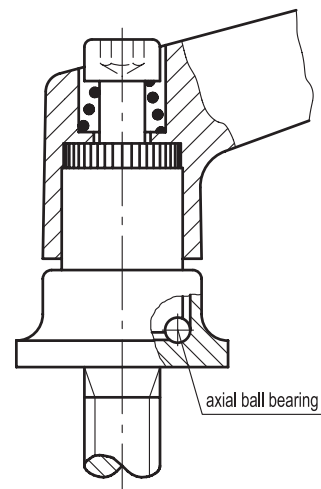
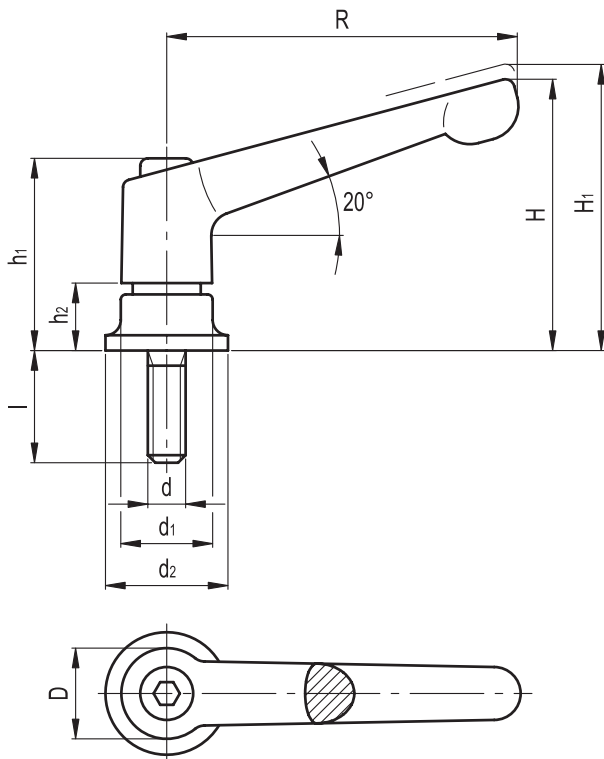


Adjustable handles with increased clamping force

- **Lever**
Zinc die casting.
- **Colour**
 - Type SW: RAL 9005 black epoxy resin coating with matte finish.
 - Type OR: RAL 2004 orange epoxy resin coating.
 - Type RT: RAL 3000 red epoxy resin coating.
 - Type SB: RAL 9006 silver epoxy resin coating.
 - Type CR: chromium plated.
- **Locking element with threaded stud**
Nitrided tempered steel with threaded stud.
- **Thrust ball bearing**
Nitrided tempered steel.
- **Fitting screw**
Black-oxide steel.

Characteristics

Adjustable handles GN 300.4 can withstand a double tightening clamp force thanks to a larger friction surface and to the thrust ball bearing which rotates freely thus reducing friction on the element. The reduced friction on the element and a greater pre-load avoid the deformation of the surface.



Standard elements Description ▲	Main dimensions								Threaded stud		Weight
	R	D	H	H1	h1	h2	d1	d2	d	l	grams
GN 300.4-63-M6-20- GN 300.4-63-M6-27-	63	17.5	48.5	52.5	34.5	11	17.5	24	M6	20 27	99 103
GN 300.4-78-M8-21- GN 300.4-78-M8-36-	78	21	58.5	62.5	39.5	11.5	21	25	M8	21 36	152 156
GN 300.4-92-M10-29- GN 300.4-92-M10-47-	92	24	68.5	72.5	46.5	13.5	24	30	M10	29 47	218 223
GN 300.4-108-M12-34- GN 300.4-108-M12-50- GN 300.4-108-M12-57- GN 300.4-108-M12-65- GN 300.4-108-M12-85-	108	30	82	87	56.5	18	30	35	M12	34 50 57 65 85	366 382 389 397 417

▲ Complete the description of the standard item needed specifying the surface finishes: SW (black), OR (orange), RT (red), SB (silver), CR (chromium-plated).