

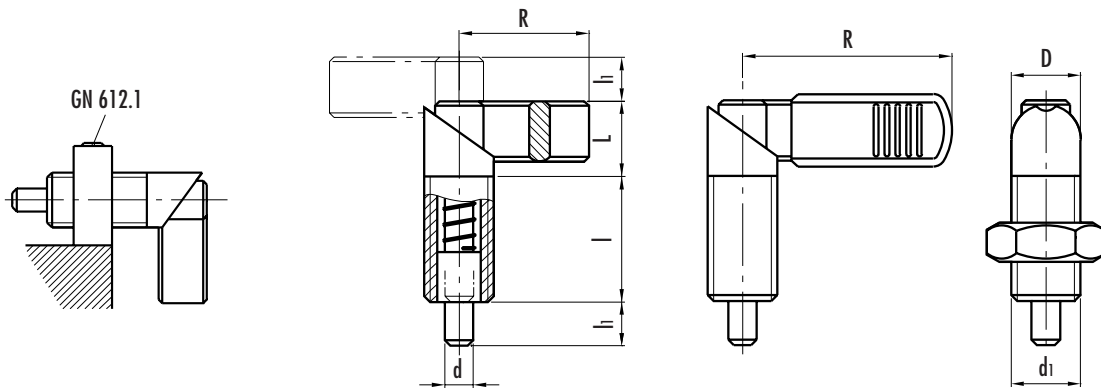
# GN 612

## Lever indexing plungers

- **Black oxide steel body.**
- **Nitrided steel plunger.**
- Black oxide **steel lever** (type A, AK).
- Black oxide **steel lever** and black high impact strength polyamide-based (PA) technopolymer with matte finish **lever cover** (type B, BK). Resistant to solvents, oils, greases and other chemical agents.
- Black oxide steel **lock nut** (type AK, BK).

GN 612.1 flange is available to attach the plunger to the machine (see page 408).

GN 612 lever indexing plungers are used when the plunger must be retracted rapidly. Rotate the lifting lever by 180° and the plunger stops in the retracted position. The lever is maintained in this position by a notch.



Standard elements	Main dimensions							Spring pressure		Weight	
	Description	$d \begin{smallmatrix} -0.02 \\ -0.04 \end{smallmatrix}$	$d_1$	D	l	$l_i$	R	L	Preload [N~]		Max. load [N~]
GN 612-6-M16x1.5-A	6	M16x1.5	16	30	10	32	16	-	12	32	99
GN 612-8-M16x1.5-A	8										
GN 612-10-M16x1.5-A	10										
GN 612-8-M20x1.5-A	8	M20x1.5	20	36	12	37	21	-	21	58	111
GN 612-10-M20x1.5-A	10										
GN 612-12-M20x1.5-A	12										
GN 612-6-M16x1.5-AK	6	M16x1.5	16	30	10	32	16	-	12	32	134
GN 612-8-M16x1.5-AK	8										
GN 612-10-M16x1.5-AK	10										
GN 612-8-M20x1.5-AK	8	M20x1.5	20	36	12	37	21	-	21	58	146
GN 612-10-M20x1.5-AK	10										
GN 612-12-M20x1.5-AK	12										
GN 612-6-M16x1.5-B	6	M16x1.5	16	30	10	42	-	-	12	32	101
GN 612-8-M16x1.5-B	8										
GN 612-10-M16x1.5-B	10										
GN 612-8-M20x1.5-B	8	M20x1.5	20	36	12	52	-	-	21	58	113
GN 612-10-M20x1.5-B	10										
GN 612-12-M20x1.5-B	12										
GN 612-6-M16x1.5-BK	6	M16x1.5	16	30	10	42	-	-	12	32	136
GN 612-8-M16x1.5-BK	8										
GN 612-10-M16x1.5-BK	10										
GN 612-8-M20x1.5-BK	8	M20x1.5	20	36	12	52	-	-	21	58	148
GN 612-10-M20x1.5-BK	10										
GN 612-12-M20x1.5-BK	12										